

18th December 2009

Report

By

CFMEU WA

Principal contractor: H. R. Troons Pty Ltd

Crane contractor: JD Rigging Pty Ltd

Address: Armadale Road, Jandakot

Copyright © CFMEU WA 2009

Background

H.R. Troon Pty Ltd is the principal contractor constructing tilt-up concrete showrooms on Armadale Road, Jandakot. On Wednesday, 16th December 2009, at approximately 3.30pm, the office of the CFMEU WA Branch was made aware that a crane had fallen over on Armadale Road, next to the new Bunning's warehouse. On arrival to site, we found that a 160 Demag had fallen over, facing Armadale Road. It had also taken a corner of the toilet block and a tilt-up panel that had been placed earlier. **No-one was injured** which was the main concern at this point.

Observations

- Many personnel on site were in shock but no-one had any physical injuries.
- The single hook and headache ball had catapulted through the left side of the toilet block destroying urinal and pan – 'just luck no-one was using them at the time'.
- The rear of the crane carrier also took out a tilt-up panel that was propped in final position.
- There were 28 tonnes of detachable counterweight mounted on the crane at the time.
- There was no load on the crane hook at the time.
- The crane's outriggers were in and the crane was in the process of relocating to another position.
- The operator noticed the counterweight slew in the rear-vision mirror while relocating.
- It seems that the locking pin for the slew ring failed to engage properly, allowing the turntable to rotate, shifting the load of counterweights over the left side of the crane carrier. With outriggers in, this resulted in the crane falling over.

Recover lift

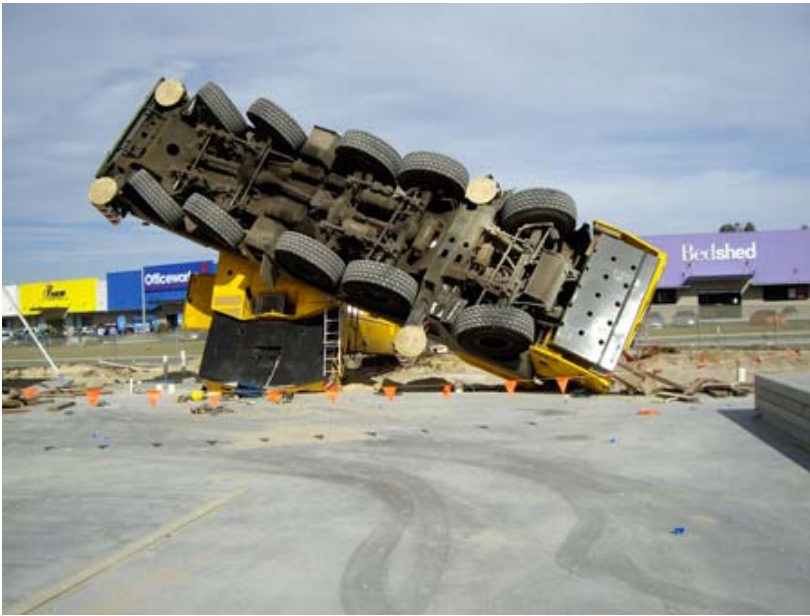
Northern Suburbs Pty Ltd co-ordinated the recover of the crane using their:

- 350 Demag
- 220 Grove
- 160 Demag.

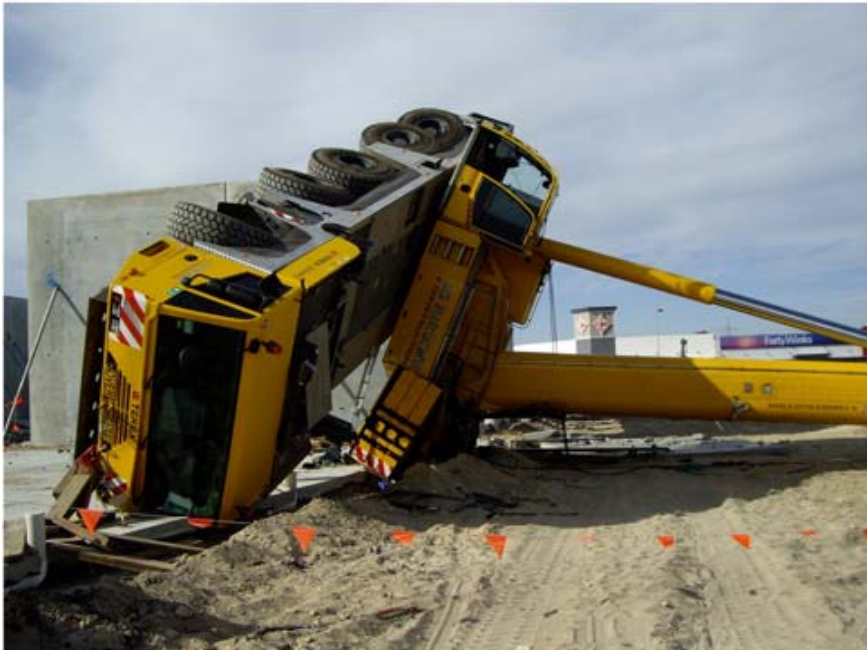
It was a well planned, event-free recover. The damaged 160 Demag crane is now in Terex's depot awaiting assessment.

Investigation is continuing.

Photos



Rear view of toppled 160 Demag.



Front view of toppled 160 Demag.

Photos



28 tonne detachable counterweights.



Crane carrier driver cabin.

Photos



Crane boom alongside toilet block.



Hook and wire rope that sliced through toilet block.

Photos



Tilt-up panel that fell when struck by crane carrier.



View showing damage to boom section.

Photos: Recovery



View of Demag crane prior to recovery.



Damaged crane is rigged up for recovery lift.

Photos: Recovery



Crane 1 takes weight of boom section.



Cranes 2 & 3 take weight and lift carrier.

Photos: recovery



Crane is rotated back on to wheels.