

BACKGROUND:

During the steel erection process on a northern suburbs construction site, a crane has suffered a major mechanical failure. The crane was attempting to position a 850kg roof truss when the connection between the hydraulic ram and the outrigger has failed, causing the crane to fall across the partially erected steel structure narrowly missing the riggers onsite.

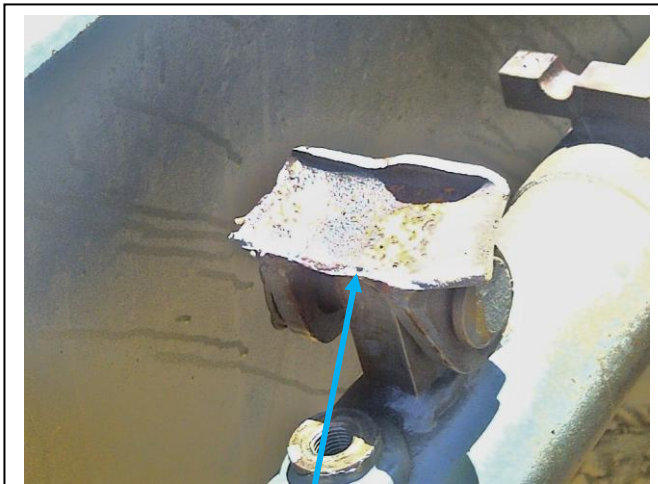
A closer inspection of the outrigger revealed that the connection was manufactured from poor cast iron material, with little or no structural integrity.

Further enquiries have revealed that the crane, a cheap Chinese import has had a string of failures relating to the outrigger assembly. It is recommended that these cranes be scrutinised upon arrival to any worksite.

The make and model of the crane is a Zoomlion PUYUAN QY 40V (40 Tonne) Chinese manufacturer.



Failed outrigger



Poorly manufactured hydraulic ram connection



For further information contact Steve McCann:
Mob: 0488 102 297
Email: smccann@cfmeuwa.com